

A boiler is one of those home equipment you discontinue taken with until eventually it misbehaves. Then it turns into the centre of the space's consolation, scorching water workouts, and on a daily basis agenda. If you reside in Essex, you possibly can understand the special rhythm of the seasons, the place a cold snap can flip a "probably it is going to be positive" location into an emergency via lunchtime.



This e-book is meant that will help you make the proper call, not just the short one. When needs to you touch a **Boiler Repair Essex** engineer, when is it low cost to troubleshoot yourself for a second, and while does the difficulty point more toward a **Boiler Service Essex** or perhaps whatever higher like **Boiler Installation Essex**?

Start with the symptom, not the date

The maximum constructive addiction is to take a look at what the boiler is doing exact now. Timing things, yet symptoms tell the reality.

A boiler can train the comparable blunders code or "bad behaviour" for assorted factors. Some faults are low-cost and simple. Others are safe practices appropriate. What you need is a choice task that feels calm within the heart of a disturbing day.

If your boiler is entirely off, won't restart, or you can odor gas, the choice is understated. Call skilled guide. If the boiler is running however inefficient, the determination is in many instances approximately scheduling provider and making plans fix.

Even if in case you have just lately had a **Boiler Service Essex** consult with, difficulties can still rise up. Parts wear, condensate systems block, drive drifts, and flue constituents can get knocked by outside reasons. A provider reduces the likelihood of predicament, it does now not ensure perfection.

The "call now" triggers

There are certain indications in which waiting feels dicy. If any of these are actual, it's time to contact a qualified engineer rather than seeking to cope with the subject by myself.

First, if you ever odor gas, deal with it as severe. Turn off controls should you recognise the best way to do it correctly, ventilate the discipline, sidestep switches and flames, and get support all of the sudden. In that

second, you are usually not identifying between "restore" and "service". You are finding out between "nontoxic" and "now not reliable".

Second, if the boiler is recurrently shutting down with lockout behaviour, tremendously along amazing sounds, continual flashing, or water leakage, the reason is perhaps some thing more than a minor reset. Lockouts shall be triggered by blocked air or flue paths, ignition topics, or device faults. Resetting over and over usally turns a achievable repair into an even bigger invoice and may waste time.

Third, look for water in which it need to not be. A secure drip from the boiler physique, a turning out to be puddle around connections, or repeated stress loss can imply a leak within the heat exchanger or pipework. That is not really a "go away it unless subsequent week" main issue. Call for **Boiler Repair Essex** help and, if conceivable, cease via heating except you understand what's happening.

When that you may do a quick determine (and in case you may want to cease)

There's a big difference between "checking for whatever thing hassle-free" and "troubleshooting like a technician". If you can still competently determine a couple of basic issues, you would ward off unnecessary callouts. If you get the rest that factors to a safeguard trouble, quit.

Here's what I imply with the aid of instant, low-risk checks. You should not dismantling elements or tinkering with gasoline controls. You are solely checking noticeable, person-reachable worries.

If the boiler is off with no warm and no warm water, be sure the equipment is looking for warmth and that the programmer and thermostat settings make experience. It sounds traditional, but I've seen loads of conditions in which the thermostat battery ran flat or the agenda was once quickly switched.

Next, look at various boiler tension in the event that your variation makes use of a strain gauge and also you've used it in the past. Many boilers want a specific chilly rigidity range. If the boiler continues losing stress, that's a clue for a leak or a ordinary drawback. In that case, you do not simply avert topping up ceaselessly. You call restoration.

Then look into seen such things as radiator valves. If the trouble is in basic terms one room that without warning stopped heating, you would possibly have an airlock or a valve problem rather than a boiler fault. If every part is cold and the boiler is making peculiar noises, the boiler itself is more likely the perpetrator.

Finally, if there are any flame failure symptoms or repeated ignition makes an attempt, resist the urge to retain resetting. That development in general wishes suitable diagnosis.

If you don't seem to be positive what you might be seeing, the reliable name remains to be to touch a good engineer. A speedy diagnosis should be would becould very well be inexpensive than hurt caused by guesswork.

Understanding the uncomplicated "breakdown Essex" scenarios

When men and women say "boiler breakdown Essex", they recurrently mean one in all a small handful of concerns. You can learn how to understand the sample, and that is helping you to decide whether to name for restoration at once or e book a provider.

A few time-honored situations demonstrate up time and again.

Some boilers conflict to ignite. This can really feel just like the boiler attempts, fails, after which locks out. Sometimes it's related to ignition system, gasoline grant problems, or flue or air trouble. These should not DIY jobs. Even if you will reset it, the underlying fault continues to be there.

Other boilers run however do now not warmth properly. You could get tepid water, susceptible warm water move, or radiators that in no way reach temperature. That points to troubles like system stability, stream disorders, scaling, sensor faults, or pump-associated disorders. When it's chronic, **Boiler Repair Essex** is the desirable course.

Then there is the "pressure issue" tale. A boiler that loses rigidity can indicate a leak. Some structures additionally have enlargement vessel disorders. If you normally most sensible up and the pressure drops to come back, you're dealing with anything structural. A service received't restore that lengthy-term.

If the boiler makes banging, gurgling, or peculiar noises, contemplate circulate, air, limescale, or pump overall performance. In some circumstances, a **Power Flush Essex** can also end up part of the plan, primarily where radiators have come to be inefficient or sludge has developed up. Power flushing is simply not invariably the first step, but when it's necessary, it will possibly prevent exchanging method that might differently fail early.

Boiler repair as opposed to boiler provider: the distinction you feel within the house

It supports to reflect on a **Boiler Service Essex** stopover at as preventative care, like checking brakes in the past they scream. A acceptable carrier aims to avoid the boiler operating effectively and efficaciously, refreshing up combustion areas, make sure combustion performance, and take a look at controls and protection strategies.

Boiler Repair Essex, through assessment, is precipitated by using a fault. It's about solving the purpose the boiler just isn't doing what it may still do.

Sometimes the change is obvious, like a leaking valve. Sometimes it's blurred, surprisingly while signs are mild or intermittent. A boiler is additionally "operating" but no longer reliably. That would be a signal of portions operating at the threshold, combustion instability, or a arising thing with ignition or sensors.

If you're noticing habitual points, it's low-budget to request diagnosis in place of most effective scheduling pursuits repairs. A accurate engineer will generally find a way to inform you regardless of whether the task is most popular tackled as a fix now or no matter if service and monitoring is satisfactory.

The warm water perspective: familiar blunders that waste time

Hot water complaints can send employees down the wrong path. I've seen families consciousness on faucets and shower heads when the truly situation is the boiler or the water temperature keep an eye on.

If sizzling water takes ages to reach, the complication is probably boiler temperature control, a circulation subject, or a technique configuration level. If scorching water is inconsistent, it may well be a inaccurate diverter valve, a sensor difficulty, or a scaling hindrance affecting warmthness move.

If you have got a combi boiler, be aware that it prioritises sizzling water demand. If heating works pleasant yet sizzling water doesn't, the fault most often elements away from commonly used boiler wellbeing and toward system involved in switching and heating the home supply.

If you've gotten a technique boiler with a cylinder, the cylinder thermostat, time schedules, and immersion controls (where perfect) also can confuse the picture. That's why the first question I ask whilst advising an individual is whether or not the fault indicates up in heating, warm water, or both.

Pressure, leaks, and "topping up": whilst to cease and call

Pressure loss is one of many so much easy "is that this a fix?" moments. Many house owners get used to checking it weekly in the time of chilly snaps, fairly if the manner has a history of slight drift.

The key difference is regardless of whether tension loss is slow and predictable, or sudden and irritating.

If tension drops steadily and simplest via a small amount, the growth vessel might possibly be losing effectiveness or there may be minor permeability disorders. Even then, you should still evade ignoring it. It's a serviceable fault, but it most of the time desires inspection.

If force drops speedy after refilling, or you understand dampness, which is in all likelihood a leak. Leaks can also be hidden beneath floors or in the back of panels. A repair visit is the proper flow.

If you retailer topping up because it "works for now", that you can find yourself with repeated air creation into the procedure. That contributes to noise, diminished heat output, and in some cases accelerated put on of formula. There's also the possibility that a filling habit masks a severe leak.

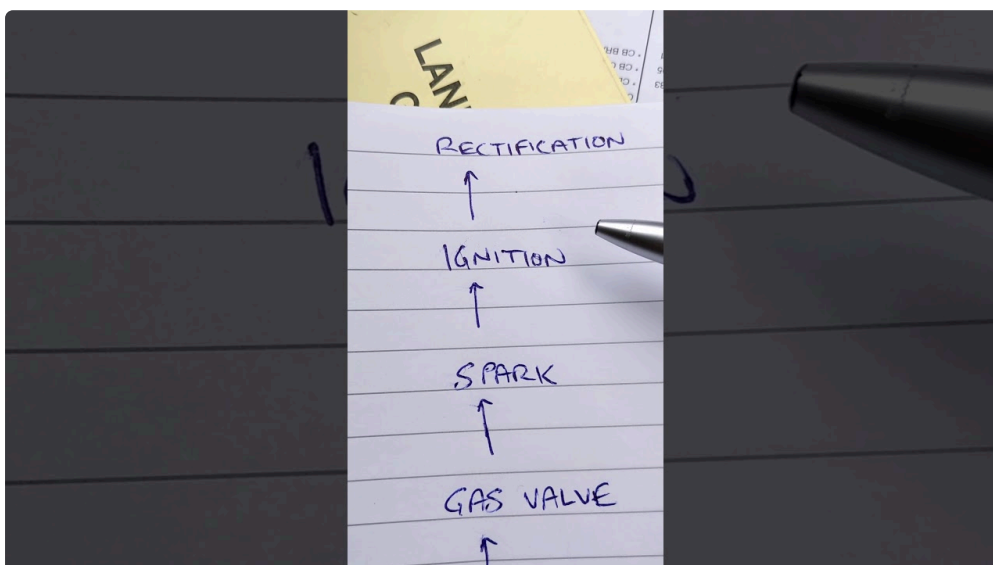
A basic rule that facilitates: if strain disorders return greater than as soon as or look to irritate, don't deal with it as maintenance. Treat it as a fault.

When you will likely be looking out at extra than a repair

Sometimes the suitable determination isn't very "repair now" or "service next". It's "what else goes on in the belongings?"

A boiler doesn't exist in isolation. Pipework condition, method cleanliness, radiators filled with air, thermostat process, and installation excellent all have an affect on how lengthy system ultimate.

Here are a few conditions the place repair might discover an even bigger graphic.



If your radiators are chilly at the suitable or erratically warm, and you've had ongoing functionality subject matters, sludge or scale should be would be could very well be cutting back warmness switch. This is

wherein **Power Flush Essex** discussions are available in. A clean manner steadily makes upkeep extra nontoxic, incredibly in which pumps or valves had been operating towards resistance.

If your boiler is struggling to ignite and the fault retains routine, the difficulty is probably related to venting, flue termination, or flue layout picks. That continues to be a fix process, but it's component of a broader review. In a few cases, transformations to flue or condensate routing need attention.

If you might be in a assets with older pipework and frequent aspect replacements, you would at last weigh even if **Boiler Installation Essex** is the larger trail. Nobody wants to jump to substitute for the sake of it, but neither does any individual wish a cycle of maintenance that by no means restores consolation correctly.

Gas security assessments and certificate: don't deal with them like paperwork

In Essex, many owners hear about **Gas Safety Check Essex** and **Gas safe practices certificates Essex** in landlord contexts, however house owners additionally enjoy the frame of mind at the back of it: safe practices warranty and documented assessments.

If you have become your machine serviced or repaired, a reputable engineer will perform the suitable safety exams as a part of their paintings. For landlords, the requisites and timing are one-of-a-kind, and a correct certificate gives peace of brain and compliance.

Even whenever you are usually not a landlord, a protection-centered carrier can spot matters early. It's not pretty much passing a try. It's approximately confirming combustion, checking dependable operation, and ensuring there is no danger from flue items or ventilation.

If you're uncertain no matter if your deploy has been precise checked lately, it's worthy asking. A pro may want to be capable of clarify what they validated and what they found, in simple language.

When the difficulty is the truth is some other fuel appliance

Boilers sometimes percentage a area with other gas home equipment, like a gas fire, or they sit close to fuel pipe runs. When you've got you have got a full cluster of warning signs, you'll desire a much wider view.

For example, if heating and sizzling water are pleasant yet a gas hearth behaves oddly, that factors to the fireplace as opposed to the boiler. If you simplest have a worry with warm water and also have a gasoline cooker it is being used oftentimes, the fast focus may nevertheless be the boiler, yet it's really worth checking that the gas deliver and controls are secure.

If you're managing diverse appliances, it's far comparatively cheap to ebook specialist paintings such as **Gas Fire Service Essex** or **Gas Fire Installation Essex** while you are updating or repairing the fireplace formulation. For cooking, **Gas Cooker Installation Essex** can become important whenever you are changing home equipment, relocating an current cooker, or handling supply pipe transformations.

The sensible determination the following is ready separating the symptom. If the whole lot fails mutually, the boiler seriously isn't the most effective suspect. If merely one equipment fails, consciousness your concentration there.

Where LPG Essex suits into the picture

Not every homestead is on natural gas. Some houses function on LPG, and in the ones situations the signs of hardship can overlap with different tactics, however the specifics fluctuate.

If you have got **LPG Essex** provide and your boiler is appearing up, the safest go remains to call a qualified engineer who works with LPG strategies. They should be in a position to diagnose with the ideal approach for LPG conversion and operation.

Don't think that because a boiler looks the same as one on usual gasoline that each fix is same. Fuel class variations the manner the approach should be set up and checked, so genuine analysis topics.

Plumbers and heating engineers: why the roles overlap

Heating emergencies can contain plumbing as a great deal as boiler controls. If you've a leak, a blocked condensate line, or a radiator circuit component, the boundary between "plumbing" and "boiler" can blur swiftly.

That's why **Plumbing Essex** strengthen is routinely important alongside **Boiler Repair Essex**, distinctly in which the root purpose is pipework, drainage, valves, or gadget fill and expansion disorders.

A right knowledgeable will coordinate the work, or explain what they'll tackle as opposed to what a expert part of the machine desires.

This is likewise the place it helps to don't forget your whole property. Some faults are created by different work, like a contemporary preservation that affected pipe runs, wall panels, or drainage paths.

The question human beings ask however not often imply: "How long can I go away it?"

People mostly ask for a time estimate. The proper resolution is "as long because it remains dependable and as long as it doesn't aggravate the underlying fault."

If your boiler is leaking water, the prolong is always measured in hours, now not days. If it really is intermittently heating but regularly locks out, that could still strengthen. If it is going for walks yet not heating appropriately, you would possibly have some room to time table, relying on the severity and season, however you may still deal with it as a priority.

In winter, ready longer can imply colder rooms, frozen pipes menace in excessive circumstances, and pressure that makes resolution-making more durable. In summer, the urgency should be diminish, yet protection signals nonetheless trump relief.

If you want the top-rated real looking attitude, call and ask for an evaluate. Many concerns grow to be clearer briefly as soon as an engineer can see the boiler going for walks and examine tension, combustion efficiency, and security controls.

Edge circumstances that confuse homeowners

Some cases are usually not "basic boiler breakdown", they are just messy.

A boiler that makes a whistling noise will be conventional on a few versions, or it may possibly point out a pass restriction or scaling. A boiler that brief cycles, begins and forestalls most often, may be sensor complications, procedure stability issues, or venting trouble.

A estate with inconsistent heating will be caused by a thermostat strategy. If a person just lately modified sensible thermostats, altered wiring, or moved room sensors, a "boiler fault" is usually created by keep watch over settings. That's why it enables to observe any up to date modifications in the area earlier calling. Tell the engineer what transformed. It saves time.

Also, don't ignore airflow trouble. If the boiler is in a cabinet with deficient air flow, or if outside conditions impact flue and vents, that will intent faults. A restore could involve more than replacing materials, it can comprise correcting airflow pathways.

Should you e book an engineer or strive DIY parts?

Most boiler procedures don't seem to be a DIY-friendly realm. Even whilst the fault appears minor, entering burner materials, gas valves, seals, or flue connections without the correct tests and fuel safeguard know-how is simply not price the danger.

There's additionally the knock-on effect. If you attempt DIY and anything is going unsuitable, the engineer has to first determine what has been altered prior to they could diagnose. That can prolong restore and complicate expenses.

If you are attempting to solve the downside your self, retain it to dependable and fundamental exams: be certain settings, inspect power if you happen to realize your aim stove, search for seen leaks or blockages at out there issues.

If you're undecided, name a skilled. In the long term, a properly analysis mainly charges less than the effort and time of repeated guesswork.

How to opt a repair business enterprise in Essex with no getting stuck

You choose an engineer who doesn't rush to exchange areas, however additionally doesn't underplay safeguard. When you call, you are able to hear for how they speak approximately analysis.

A precise **Boiler Repair Essex** name most likely starts offevolved with questions on indicators, any blunders codes, no matter if the fault is gift for heating, hot water, or either, and whether there are signs and symptoms like power loss or leakage.

Ask about their mind-set. Do they get started with exams and measurements? Do they provide an explanation for what they located and why a specific fix makes experience? Do they discuss whether **Boiler Service Essex** is due after the restore, or whether overall performance suggests things like scaling and a competencies **Power Flush Essex**?

If you are also dealing with wider dwelling house comfort themes, a reputable native firm may just supply extra than just boilers. Some patrons package deal in **Aircon Essex** and **Air Conditioning Essex** problems, tremendously after they have a number of comfort tactics serviced by the related provider. Even whenever you simplest want boiler lend a hand, it's a sign of broader competence if they could coordinate different heating and luxury jobs appropriate.

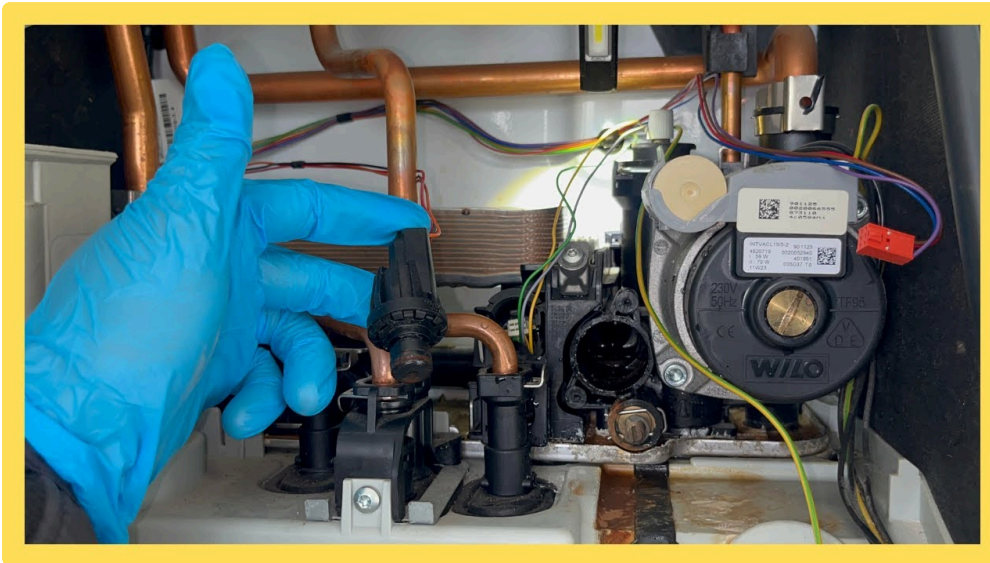
For maximum people, the most sensible determination component is regardless of whether you sense understood and whether or not the engineer gives a clear plan. Boiler faults can also be puzzling, a relaxed explanation is going a long method.

A brief selection consultant you possibly can use while you're stuck

When the heating stops and also you desire to settle on what to do subsequent, those questions are quick and sensible. They also are the identical questions a fair engineer will ask you.

- Is the boiler off, locked out, or commonly failing to ignite?
- Do you note any gasoline smell, distinct fumes, or flue concerns?
- Is there seen water leakage, dampness, or drive dropping repeatedly?
- Is the downside handiest warm water, solely heating, or equally?
- Have you recently modified controls, achieved renovations, or had any work within reach?

If you solution “convinced” to the security and leak questions, call for restoration rapidly. If the problem is functionality or intermittent operation, scheduling a precise diagnosis remains to be the great course, however you possibly can have greater time to set up an appointment.



Don't put out of your mind the human component: planning round Essex weather and routines

Even when you name fast, you would possibly not get comparable-day aid. So it enables to reflect onconsideration on short-time period coping and long-time period determination.

Keep showers and warm water demand realistic till the fault is constant. If the boiler is quickly unreliable, preclude patterns that stress it. For instance, if it struggles to interchange to hot water on demand, don't imagine consistent high call for is innocuous. Treat it prefer it's fragile.

For the long time, as soon as the boiler is repaired, opt on prevention. If your boiler hasn't had a fine pursuits look at various, scheduling a **Boiler Service Essex** after repair is sensible. If you reside someplace with older pipework or continual move complications, talk whether or not a formulation fresh, including **Power Flush Essex**, is valued at thinking about.

And once you are involved in improvements, a authentic dialog about **Boiler Installation Essex** possibly less painful than you anticipate. People almost always assume replacement manner shifting immediate and spending straight. Sometimes it approach making plans in advance, collecting prices, and deciding on a timeline that fits your place lifestyles.

When it will become a multi-alternate day

Sometimes boiler fix happens alongside other work. The condominium is a community, and one process can uncover yet one more.

If you will have a hidden leak that affected a close-by floor house, you would need excess **Plumbing Essex** work to unravel drainage or fix pipe routes. If the boiler cabinet become tormented by poor air flow, it could need an development. If you're putting in a new gas function, like a fire or cooker, it would be the suitable time to coordinate gas equipment checks so every little thing runs as it should be mutually.

Occasionally, you can actually even pay attention about individual setups, like industrial arrangements the place gasoline is used for cooking and industry operations. If anyone mentions a "burger van gasoline" arrangement, that elements to a numerous compliance and setting up context. It's really worth treating the ones occasions individually and making sure the suitable safeguard mindset, testing, and bureaucracy are in vicinity.

If you've got you have got any gasoline appliance in your house or place of job, the safe approach is regular: best suited deploy, most appropriate checks, and right service.

The best suited time to act is before wintry weather embarrassment

There is a distinctive kind of regret that arrives after a boiler fault: "Why didn't I name formerly?" You sense it while the fix might have been booked in calmer conditions, formerly the schedule filled up and earlier the temperature dipped sharply.

If your boiler has been making noises, taking longer to warmth, shedding strain, or behaving inconsistently, deal with the ones as hints. It will possibly not require emergency support, however it does require attention. That is how you avoid the situation the place the boiler fails on the worst achievable time.

A well-timed call almost always leads to easier fixes. A rushed name for the duration of top chilly weather can nevertheless be resolved, however it's more difficult to plot and at times skill longer waits for a go to.

If you're examining this since your boiler is already suffering, you're no longer at the back of. You're at the desirable moment to make a practical choice.

Final suggestion that isn't a earnings pitch

Calling for repair just isn't approximately panic, it's approximately judgment. Safety, water leaks, gas-appropriate issues, repeated lockouts, and procedure power loss are veritably clean indications.

Performance things and small inconsistencies are normally greater refined, yet they still deserve a suited take a look at, surprisingly if they preserve returning.

Whether you want **Boiler Repair Essex**, an ongoing **Boiler Service Essex** plan, suggestion on **Boiler Installation Essex**, or make stronger with related gas and dwelling convenience companies like **Gas Safety Check Essex**, **Gas Fire Service Essex**, **Gas Cooker Installation Essex**, **LPG Essex**, **Plumbing Essex**, **Aircon Essex**, or **Air Conditioning Essex**, the top-rated final results comes from getting the top analysis early.

If you tell me what your boiler is doing, what blunders code it indicates (if any), and whether or not the problem is heating, sizzling water, or [Aircon Essex](#) each, I can help you slender down the maximum doubtless motives and the suitable subsequent step to take.