

Understanding CS: GO Case Opening: How It Works, Odds, and Risks

CS: GO (Counter-Strike: Global Offensive) has actually progressed far beyond its origins as a tactical shooter. Among the most talked-about functions is the in-game "case" system, a mechanic that lets gamers spend genuine money to unlock random virtual products. This article offers a neutral, data-driven summary of how case opening functions, what the chances are, and what players ought to think about before participating.

What Is a CS: GO Case?

A CS: GO case is a locked container that can be opened just with an unique "key." Each case includes a random choice of skins (weapon surfaces) that range from common (Mil-Spec) to extremely unusual (Knife or Gloves). Players get cases either through gameplay drops (now rare) or by acquiring them from the Steam Community Market. To open a case, a player needs to likewise purchase a key-- typically priced at £ 2.50 GBP (topic to local taxes and currency changes).

When a case is opened, the game's server runs a random number generator (RNG) that selects an item based upon pre-defined probability tables. The resulting skin is then added to the gamer's stock, where it can be kept, traded, or offered.

How the Odds Work

Valve, the designer of CS: GO, publishes the approximate drop rates for each case. While specific numbers can vary slightly in between updates, the probabilities follow a tiered structure:

Item Tier (Rarity)	Approximate Drop Rate
Mil-Spec (Blue)	~ 79.0%
Restricted (Purple)	~ 15.0%
Classified (Pink)	~ 3.2%
Covert (Red)	~ 0.64%
Rare Special Item (Gold-- knives/gloves)	~ 0.26%

These figures are based upon the authorities "Case Odds" information that Valve launched in 2020. Due to the fact that the chances are heavily weighted toward lower-tier skins, many gamers will receive common items. The chance of getting a high-value skin (e.g., a Karambit or AK-47 Case Hardened) is incredibly low, often less than one in a hundred opens.

Popular CS: GO Cases

The CS: GO case library has actually expanded considerably throughout the years. Below is a list of some of the most regularly opened cases, in [cs2 case opening](#) addition to a quick description of the skins they commonly contain:

1. **Snakebite Case**-- Introduced in 2021; includes the popular "Snakebite" surfaces for the M4A4 and Desert Eagle.
2. **Clutch Case**-- Released in 2022; consists of the "Clutch" finishes and the very first brand-new "Bayonet" skin in numerous years.
3. **Revolver Case**-- Known for the renowned "R8 Revolver" surfaces, a preferred amongst collectors.
4. **Glove Case**-- The first case to guarantee a set of glove skins; still extremely demanded.
5. **Gamma Case**-- Offers dynamic "Gamma" surfaces for the M4A1-S and the AK-47.
6. **Chroma Case**-- Features the traditional "Chroma" surfaces and the uncommon "Case Hardened" pattern.
7. **Horizon Case**-- Introduces the "Horizon" line of weapons and the "MP5-SD" sub-machine weapon.

8. **Operation Wildfire Case**-- Includes the "Wildfire" finishes and a set of-themed knives.
9. **eSports 2013 Case**-- A classic case from the early eSports series, treasured for its fond memories.
10. **Siric Case**-- The most recent addition (since 2024), featuring new "Siric" artwork and a fresh set of knife versions.

These cases can be purchased separately on the Steam Market, where costs change based on need, rarity of the consisted of skins, and overall market belief.

The Economics of Case Opening

- **Expense of a Key:** £ 2.50 (GBP) usually.
- **Average Cost per Open:** £ 2.50 + cost of the case (differs from £ 0.05 to £ 30+ depending on rarity).
- **Expected Value (EV):** Because most of products prevail, the typical market worth of a single opened skin is far lower than the combined expense of the case and secret. A lot of analyses position the EV at roughly £ 0.70-- £ 1.20 per open, meaning the bulk of players will lose cash with time.

The secondary market on Steam (or third-party trading platforms) permits gamers to sell undesirable skins. However, deal fees, market changes, and the "Steam Wallet" system (which limits cash-out options) can further wear down possible earnings.

Risks and Responsible Play

While case opening is a game mechanic, it carefully resembles a loot box model that many regulators classify as a kind of gambling. A number of jurisdictions-- consisting of Belgium, the Netherlands, and parts of the United States-- have actually enforced limitations or straight-out bans on loot boxes in video games marketed to minors.

Gamers ought to be conscious of the following risks:

- **Financial Loss:** The chances favor low-value products, so the probability of sustaining a net loss is high.
- **Dependency Potential:** The variable benefit loop can set off compulsive habits, similar to other gaming activities.
- **Regulatory Uncertainty:** Laws concerning loot boxes are developing; future updates may restrict or alter the case-opening experience.

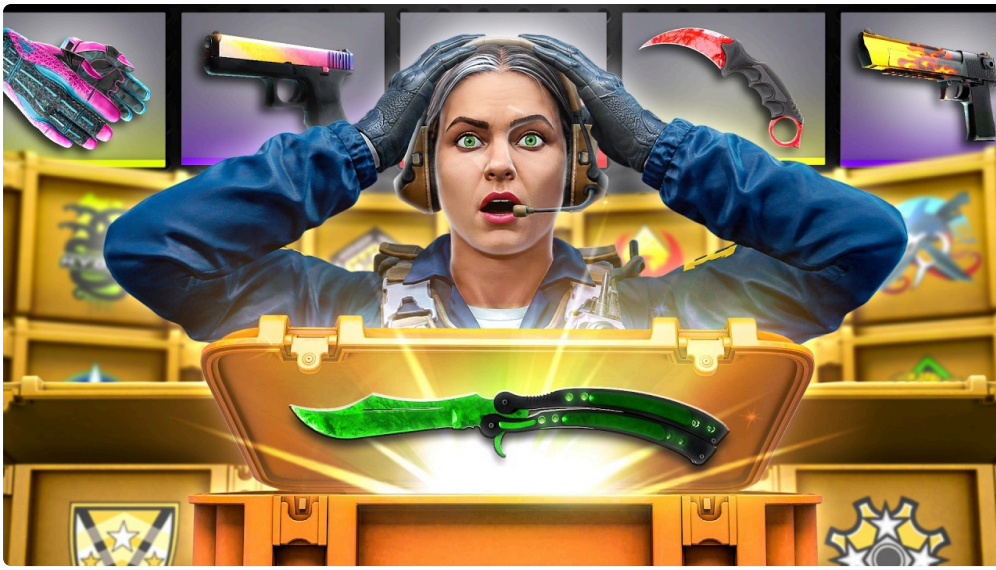
To reduce these threats, lots of professionals advise setting a strict budget, treating case opening as entertainment rather than a financial investment, and benefiting from self-exclusion tools provided by Steam.

Often Asked Questions (FAQ)

1. Is opening CS: GO cases thought about gambling?Yes. Lots of regulative bodies classify loot boxes-- as in CS: GO case opening-- as a form of gambling since they include a random possibility of receiving a product of variable financial value.

2. Can I sell the skins I receive from a case?Yes. Skins can be listed on the Steam Community Market or traded on third-party platforms. However, Steam does not allow direct money withdrawals; profits are held in the user's Steam Wallet. 3. Are the drop rates the exact same for

every case?No. Each case has its own possibility table, though they typically follow the tiered structure revealed above. Some newer cases have a little greater rates for particular uncommon products. 4. Do case odds alter over time?Valve can change chances in updates.



For instance, the "Rare Special Item"

probability was decreased in a 2020 patch. Players need to check the authorities' Case Odds"page for the most current numbers. 5. Can I enhance my opportunities of getting an uncommon item?No. The outcome is figured out solely by the server-side RNG; there are no methods or external tools that can change the chances. 6. Are there any legal age restrictions for acquiring keys?Steam's Terms of Service need users to be a minimum of 13 years of ages(or the age of digital approval in

their jurisdiction)to create an account. Nevertheless, many jurisdictions deal with loot boxes as betting, and some need users to be 18 +. 7. What need to I do if I think I have a betting problem related to CS: GO?Seek help from an expert therapist or support system. Steam likewise provides self-exclusion options that can momentarily disable the ability to acquire keys or trade products. CS: GO case opening is a feature of the game's community, generating billions of dollars in income for Valve and offering gamers a chance to obtain desired virtual skins. However, the odds greatly favor low-value items, and the mechanic resembles gambling, which carries financial and addicting dangers. By comprehending the probabilities, the marketplace characteristics, and the regulative landscape, players can make educated decisions about whether-- or how-- to engage with case opening. Constantly approach the system as a kind of entertainment, not a method to earn money, and workout care to keep the experience pleasurable.