

A kitchen is an ordinary quiet workshop. You can simmer sauce at the same time you wash up, stash leftovers inside the refrigerator, run the dishwasher, fill a kettle, and by some means nonetheless be expecting hot water on demand. Then one morning the faucet goes vulnerable, the sink takes ages to empty, or the boiler behaves find it irresistible has forgotten learn how to warmth a abode. Plumbing matters in a kitchen hardly keep "small" for lengthy. Even while the challenge is native, the indications generally tend to unfold, considering the fact that water and heat are associated by means of pipework, scorching water cylinders (when you've got one), and anything fuel equipment is feeding the process.

I were referred to as out to kitchen faults that sounded practical at the telephone. "The tap's dripping." "The dishwasher isn't filling." "The boiler assists in keeping clicking." Sometimes it truly is literally a worn washing machine or a blocked filter. Other instances it really is a hairline break up in a pipe hidden behind units, a partially closed isolation valve, or a boiler manipulate downside that handiest suggests itself whenever you run warm water twice in short succession. The activity becomes less about a single restore and more about getting the complete procedure lower back into steadiness.

Below is a sensible help to the most overall kitchen plumbing upkeep and installations, how they recurrently fail, what to observe for, and whilst it's valued at involving a fuel-qualified engineer, peculiarly in case your scorching water comes from a boiler or you will have any gasoline appliances inside the kitchen.

## **The kitchen "plumbing indications" that suggest one of a kind things**

Kitchen plumbing concerns traditionally reveal up as one among a handful of court cases. The difficult aspect is that every one complaint can have assorted explanations relying on your setup.

If your sink drains slowly, you would have a basic blockage inside the capture or waste pipe. But if that is only slow while the dishwasher is working, the problem is as a rule linked to the dishwasher waste connection, a flap valve it really is sticking, or a poorly vented association. Venting sounds like a element, yet it transformations how easily air can cross through the process and how quite simply water can float out with out growing a partial vacuum.

Low water strain on the kitchen tap is every other traditional. Sometimes it is the tap itself, principally if the aerator or cartridge is scaled up. If you realize the similar low rigidity in different faucets, the trigger may very well be a shared isolation valve became relatively off, a blocked clear out upstream, or things with the water delivery. Then there are blended warning signs, like chilly water tremendous yet warm water susceptible. That facets closer to the recent edge of the procedure: scorching water cylinder overall performance, boiler strain, a failing pump, or scale buildup in pipework and warmth exchangers.

Then you've got you have got the "rainy kitchen" category. Leaks shall be obtrusive, yet they might also be sneaky, showing as damp patches on kickboards, musty smells under the sink, water stains on the bottom of floor, or repeated journeys to mop up where a spill has on no account been seen. The most troublesome part of leaks is that the water can trip prior to it seems to be, so the likely access level might not be the right source.

## **Under-sink plumbing: where maximum kitchens quietly fail**

Most kitchen plumbing is both under the sink, at the back of the dishwasher, or routed as a result of the cabinetry to a boiler or warm water formulation. The beneath-sink arena is where you discover the lure, waste connection, keeping apart valves, and flexible hoses.

From sense, the standard suspects are:

- aged or loose waste pipe joints
- blocked traps and particles buildup
- difficult water scaling on faucet aerators
- perished bendy hoses, exceptionally if they were kinked for the duration of installation
- leaks across the close-off valves in which gadgets had been moved or appliances were serviced

If you may have a trendy kitchen with minimum entry, it's far tempting to disregard a small drip. I get it, all people wants to dodge taking a cabinet apart. But drips have a tendency to get worse. A gradual weep can corrode fittings or soak MDF, and you then are not just coping with water ruin, you're coping with a cupboard that has to be replaced.

A functional approach is to treat some thing beneath the sink that leaves a path as a "restore now" component. That entails condensation that assists in keeping returning. Condensation can happen when hot and cold pipes are near collectively, chiefly in heat kitchens, however a regular wet patch remains price investigating.

## **Slow draining sinks and blocked waste: extra than just "hair within the plug"**

Kitchen sink blockages oftentimes glance obtrusive while you open up the entice, yet they might possibly be harder while the waste path is long or while the blockage is further down the run. Grease is a big one. Even if you scrape plates smartly, cooking oils and fatty residues can build up internal pipe partitions. Over time the pipe becomes narrower, and drainage slows step by step unless it crosses the element in which it starts backing up.

Dishwashers make this worse in a alternative manner. They feed cuisine and detergent waste into a shared waste connection. If the dishwasher hose is attached incorrectly, if there's no precise fall, or if the air gap association (in which used) is blocked or misaligned, the manner can backflow into the sink drain. That can create the ugly scenario in which the sink drains slowly and the dishwasher smells "stale" even after cleansing.

When I concentrate on a blocked kitchen drain, I feel in phrases of zones rather than guessing. First, is it the seize? Second, is it the department that serves the dishwasher? Third, is it the downstream pipe where it meets the primary line? The big difference topics as a result of the fixes fluctuate. Removing and cleansing a trap is straightforward, yet if the blockage is downstream, chemical drain cleaners shall be unstable for older pipework and will irritate the crisis via turning the debris right into a rough plug.

I routinely counsel beginning with mechanical tricks, then figuring out if the approach necessities a legit fresh. A properly clearance should be would becould very well be obligatory in case you are going through a collapsed area, heavy grease build-up, or roots, exceptionally if the external drainage course may be discomfort.

## **Leaks underneath the sink: tracing with no guesswork**

Under-sink leaks can also be because of free slip nuts, damaged seals, hairline splits, or perished versatile connectors. The arduous component is that the leak source %!%%743549f3-0.33-47d5-aab9-e1d353d1a28e%%!%% above in which the water lands. If you spot water gathering at the base of the

cabinet, it might be coming from above the lure, or it could be from an isolation valve it truly is weeping and running alongside the lower back.

One trick I use is to dry all the things competently after which recreate the waft sparsely. If the leak in basic terms seems whilst the dishwasher runs, you likely have a dishwasher inlet or waste main issue, or a connection that most effective gets confused all over the dishwasher cycle. If it seems while applying the tap at complete circulate, the inlet hoses or tap connections are more likely.

If there may be any sign of a gas-linked element, I do not deal with that as a plumbing-solely state of affairs. Kitchens can involve gas home equipment and gas pipework that runs on the subject of plumbing traces. Any smell of gasoline or damaged gasoline fittings are prompt discontinue situations. From there, the top course is a Gas safety assess and any required Gas protection certificates, now not an improvisation.

## **Boiler breakdown and kitchen sizzling water: why the kitchen tells at the system**

When the kitchen is the first room you notice sizzling water troubles, it also includes due to the fact that warm water call for is primary. You do not simply run a bath and forget about it. You fill a kettle, rinse plates, wash fingers, and run the dishwasher. If your boiler or heating device is struggling, kitchen demand typically triggers the fault.

A boiler breakdown can found in the different techniques:

- no sizzling water, but heating works
- scorching water works, but power drops or the circulation is weak
- the boiler runs for a quick time, then stops
- peculiar noises while warm water is requested
- intermittent operation that appears to be like random

The factors can number from a fundamental hindrance like a sensor fault to scaling and limited pass. If you've got you have got viewed a pattern wherein scorching water fails after a certain era, it shall be concerning drive, movement, or a factor defensive the boiler from overheating.

Some repairs are simple, like changing misguided portions, adjusting settings, or addressing air in the components. Others require extra interested diagnostics. If you've gotten radiators that battle to warmth appropriate too, flushing and stream checks can transform central. Power Flush is from time to time acknowledged in conversations approximately cussed chilly spots or gadget sludge, notwithstanding it is simply not mechanically the solution. The decision relies on signs, technique age, pipe design, and what the machine appears like whilst inspected.

If you're applying LPG, the deploy and servicing technique nevertheless wants to be accurate for the gas classification and the appliance design. A boiler or cooker set for the inaccurate arrangement, or with wrong tension, can result in terrible functionality and hazardous operation. That is where certified Boiler Service and Boiler Repair work is available in. For gasoline home equipment, it is also in which Gas Safety Check and the crucial Gas safety certificates count.

## **Boiler installation in the kitchen or within sight: space, get entry to, and future faults**

Most boiler installations don't seem to be contained in the kitchen, but kitchens normally host the boiler cabinet, take a seat adjoining to it, or join into the same hot water distribution. A sensible install is one that retains get admission to real looking. I have obvious boilers established in methods that seem to be tidy but create years of inconvenience. When get admission to is difficult, servicing becomes slower, and faults that must be speedy to remedy become high-priced excess time due to the fact each and every regimen activity requires extra dismantling.

When making plans a boiler installing, the "kitchen actuality" is that pipe routes should still dodge unnecessary sharp bends and that kitchen-sort humidity and low spills will have to be regarded as in placement. Good air flow things, and the flue routing necessities to be appropriate.

If you could have an older kitchen with tight cabinetry, focus on the people that will come later to fix matters. A first rate installer plans for destiny Boiler Repair and Gas Fire Service type get entry to, even though it feels pointless on day one. It is the distinction between a process you forget about about and a job you curse at any time when you desire a side changed.

## **Gas cooker set up and kitchen fuel safety**

Many kitchens incorporate a fuel cooker. Some persons move from electric powered to gasoline for swifter warm and larger temperature control, highly for baking, stir-frying, and legit-style cooking. Gas Cooker Installation needs to be completed to an appropriate ideas, with just right sealing and testing. The merit of properly installation is just not simply functionality, this is reliability and a clear, trustworthy setup.

If you run a food business, you would have exceptional issues. For instance, a Burger van gasoline setup has its personal practical wishes around transport, comfortable connections, and trustworthy operation in variable environments. Even then, the ideas are the same: [Gas Cooker Installation Essex](#) good fittings, proper tests, and documentation in which required.

A Gas protection certificate just isn't office work for the sake of it. It is proof that security tests had been performed, that the appliance is working efficiently, and that any deploy is confirmed. If you ever sell a assets or quit everyday jobs to a new tenant or company, documentation may be as central as the restoration itself.

## **Gas hearth and scorching water connections: whilst the kitchen and living room dialogue to every one other**

Sometimes a kitchen plumbing hindrance is a symptom of a specific thing broader within the gasoline formulation. A Gas Fire Service is absolutely not in an instant associated with a leaking sink, but the identical spouse and children scorching water and heating system can proportion stress, controls, and circulation behaviour. If a boiler is struggling and the living room flame or heating efficiency is affected, the loved ones notices first inside the kitchen considering that is wherein hot water call for is steady.

You can also have blended home equipment, the place a kitchen has a gas cooker and heating is boiler-based mostly. If any a part of the gas gadget is poorly tuned or has a element wearing out, the total formulation functionality can become inconsistent.

This is one motive I stay away from "trial and mistakes" upkeep. If the criticism is hot water habits, I want to determine boiler operation, power, and important aspects previously chasing pipework differences. Otherwise you waste time and normally turn out to be with the wrong restore.

# Choosing between fix and replacement for plumbing components

In kitchens, that is standard to repair rather than substitute. A new tap cartridge or a new lure assembly is assuredly less expensive than exchanging total pipe runs. But there are moments while substitute makes extra sense.

If you've a flexible hose that has been leaking or has been kinked, replacing that's the protected, real looking step. Flexible hoses don't seem to be supposed to closing endlessly, distinctly when lower than regular vibration or when moved all through equipment installation.

If pipework has corrosion, pinhole leaks, or repeated seal disasters at joints, it may be valued at serious about substitute of affected sections in preference to re-sealing regularly. Re-sealing can get you through the short term, yet it could actually additionally mask a deeper situation like mistaken joint alignment or a failing installing.

A an identical business-off applies to drainage. If the principle trouble is a single blockage, that you would be able to transparent it and flow on. If you maintain getting blockages in the similar area, that facets to a structural dilemma or a pipework condition. In that case, clearing devoid of converting the underlying concern turns into a cycle.

## Power flush and water nice: when the boiler predicament is in fact circulation

Water that appears tremendous on the sink can nevertheless be complete of microscopic particles and scale, tremendously in older strategies. If your radiators behave sluggishly otherwise you see continual problems after upkeep, a plumber or boiler engineer might communicate approximately flushing.

Power Flush is a method used to fresh important heating tactics by circulating water at bigger go with the flow quotes and mostly with chemical substances, depending on the components and the prognosis. It is simply not a casual resolution. It can stir up particles, and it may want to be thought of as along approach circumstance, pump suitability, valve sorts, and manufacturer directions.

If you will have had numerous Boiler Repair callouts for an identical indications, or if you recently changed a part and things did not expand, it is worth discussing whether water good quality and circulation is probably contributing. The purpose will not be to chase a buzzword. The purpose is to repair precise pass so the boiler and radiators can perform as designed.

## Air conditioning and kitchen relief: not plumbing, however it stocks the useful constraints

Kitchen consolation most often will get solved with Air Conditioning, notably in houses where warm builds up from cooking, home equipment, and sun. An Aircon install is just not plumbing, however the practicalities overlap. Routes for pipework and drainage, electric isolation, and get entry to for repairs all count number.

In a few residences, the Air Conditioning condensate drainage shares or competes with different drains. If you might be installation or relocating an air unit, it's worthy coordinating along with your plumber so condensation waste is routed accurately and does no longer create interference with sink drainage. Condensate traces are small, and blockages take place quietly. You may not notice the issue except water begins dripping from an strange region.

If you have already got a kitchen with lively plumbing considerations, it's miles real looking to model these out first. Installing more services and products on good of a complex drainage association can complicate troubleshooting later.

## **Air gaps, valves, and "small" particulars that quit considerable problems**

Kitchen plumbing is full of information that sound minor yet make protection simpler. Isolation valves be counted. If you would shut off the water to the sink, you could restoration leaks with no draining finished tactics. Access panels and wise pipe routing cut down the time cost when whatever necessities focus.

One aspect folks underestimate is top pipe assist. Unsupported pipework can sag fairly. That alterations how joints behave lower than tension and will cause leaks through the years, relatively on bendy connections.

Another element is temperature habits. Hot water traces strengthen and agreement. If fittings are restless due to the fact that they were installed too tight or too loosely, failure will become much more likely.

These are the "dull" parts that make kitchens paintings reliably. When plumbers get them appropriate, you suppose it not directly. Nothing drips, the dishwasher drains cleanly, and scorching water behaves many times across varied faucets.

## **A brief troubleshooting mindset you possibly can use earlier than calling for help**

Sometimes the most sensible motion is to slim down what is going down. I inform homeowners to follow and observe patterns, no longer to dismantle every part.

Here is a clear-cut means to reflect on it:

- Does the issue come about best when the dishwasher runs, or handiest while the tap is used?
- Is hot water affected, cold water affected, or the two?
- Do you get gurgling sounds from the sink or sluggish drainage worldwide?
- Is there obvious moisture round valves, hoses, or joints?
- Does the concern commence suddenly or build step by step over weeks?

If which you can resolution these, you support the engineer arrive with the suitable constituents and methods, and you cut the time spent checking. Even in case you aren't a plumber, observation offers you leverage.



## When you need a certified engineer, now not just a swift fix

There are plumbing disorders that you may maintain with careful DIY, like swapping a faucet aerator or cleansing a trap, assuming you're self-assured and riskless. But gasoline work is unique. If your kitchen has any gasoline appliance, including a boiler, gas hearth, or Gas Cooker Installation, there are ideas. You need certified work for defense critical duties.

If you odor gas, shut off the appliance if you will, ventilate, and do no longer attempt upkeep. Call a Gas protection cost legit.

Also, once you want a Gas defense certificates, do no longer imagine it is going to be looked after later. It will have to be issued as component of the good verification manner after install or servicing paintings.

For LPG methods, again, most appropriate setup and testing subjects due to the fact that the gasoline characteristics range. Incorrect regulator or equipment settings can purpose damaging operation. It is larger to pay for proper Boiler Service or Gas Fire Service than to gamble with overall performance and safeguard.

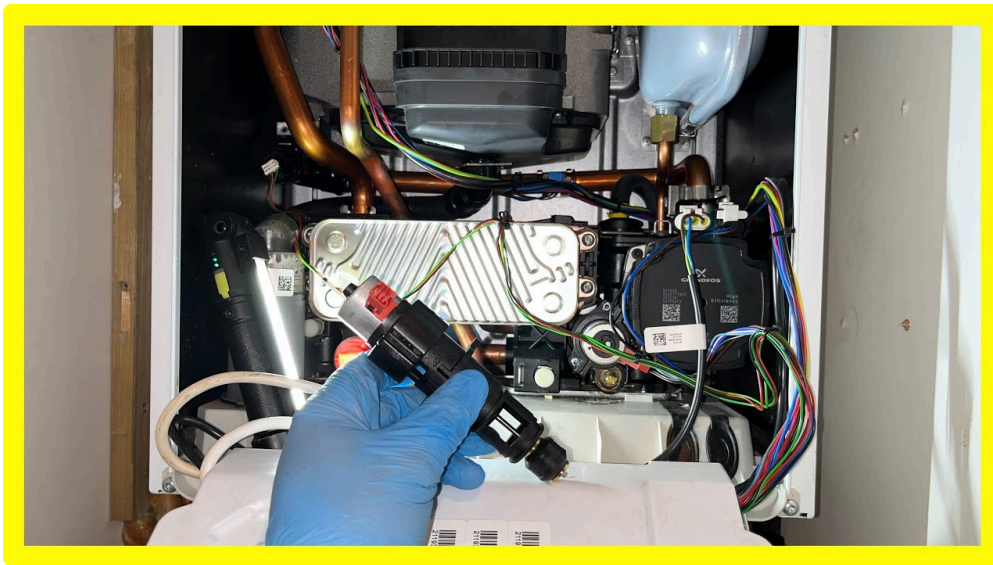
## Typical kitchen installing initiatives (and what can pass wrong)

Kitchen plumbing installations quilt extra than just "more healthy new sink and connect pipes." In actual initiatives, it is about aligning your plan with how worker's are living.

Common installations incorporate changing a kitchen sink and waste, upgrading taps, including a dishwasher, enhancing pipe routes to fit new cabinetry, or setting up a brand new boiler arrangement when renovations amendment the format.

What goes improper most often seriously isn't the obvious aspect. It is the half in the back of devices, the manner waste falls to drainage, and the interplay among special appliances sharing connections.

Dishwasher integration %!%%37470993-one thousand-4c9e-b62c-5addaacc89ae%%!%% illustration. The dishwasher waste wants ideal connection aspects and right fall, plus the perfect anti-backflow association if required via the setting up design. If the connection is just too top or poorly aligned, you get ordinary smells and terrible drainage. It can suppose like a "trap hindrance," yet it as a rule originates at the dishwasher connector degree.



For faucet installations, the chilly and scorching connections will be fantastic however the cartridge might not be compatible or established successfully. For sink waste, the seal best and catch alignment matter. A somewhat misaligned seal can leak slowly, soaking the cupboard base while leaving you yes that is just condensation.

Renovations may additionally change how ventilation works around kitchen plumbing. If you install new worktops and reduce airflow below sinks, condensation can amplify. That will not be a explanation why to disregard leaks, but it's a explanation why to be cautious ahead of assuming each and every damp patch is a plumbing fault.

## **Scheduling maintenance: timing subjects greater than you possibly can think**

If your sink is draining slowly and you've a dishwasher, do not wait too lengthy. A sluggish blockage can turn into a quit concern. In a relatives, the dishwasher possibly the in simple terms method one can keep up with day-to-day cooking messes, so a blockage influences the whole ordinary.

For leaks, timing is ready smash keep watch over. MDF swells, particle board breaks down, and fittings corrode turbo when uncovered to regular moisture. If you capture it early, repairs are generally restrained. If it runs for months, you possibly changing shelves, worktops, or floor to boot to pipework.

For boiler and scorching water points, urgency relies upon at the symptom. If you haven't any warm water in any respect, or boiler behavior indicates a fault, you choose it resolved right now. Also, if the heating device is affected, you need to look after your house from extended downtime.

In residences in which gasoline paintings is in touch, delays can create compounded issues. For example, a boiler that runs erratically can bring about rigidity fluctuations that pressure formulation. The in the past you've got you have got the excellent tests, the less likely you're to find yourself with more than one complications brought on by one underlying worry.

## **Keeping the kitchen dependableremember after repairs**

Once the repair is performed, you could possibly do a number of issues to in the reduction of repeat callouts.

With drainage, be reasonable about what is going into the sink. Scrape grease into containers rather than rinsing it down with boiling water each time. Grease cools and clings to pipework. Use strainers. Clean the entice once in a while in the event you see buildup. It is understated and it prevents the gradual narrowing that turns "gradual" into "blocked."

With faucets, dodge over-tightening connections whilst cleansing, and test for symptoms of leaks after any repairs. If your taps have aerators, descale them periodically, exceptionally in difficult water places.

With boilers and gas home equipment, the most productive preventative addiction is to service on schedule. Boiler Service and Gas Fire Service should not about fixing what is already damaged. They are approximately catching put on before it will become a fault at some point of a hectic week.

If your boiler or gasoline cooker install requires certification, maintain documentation on hand. It saves stress when landlords, tenants, or engineers choose facts of compliance. That Gas safety certificates may be effective in audits for organisations.

And while you run a industrial setup, like a Burger van gasoline association, protection routines remember even extra considering the fact that downtime is instantly tied to profit and meals protection expectations.

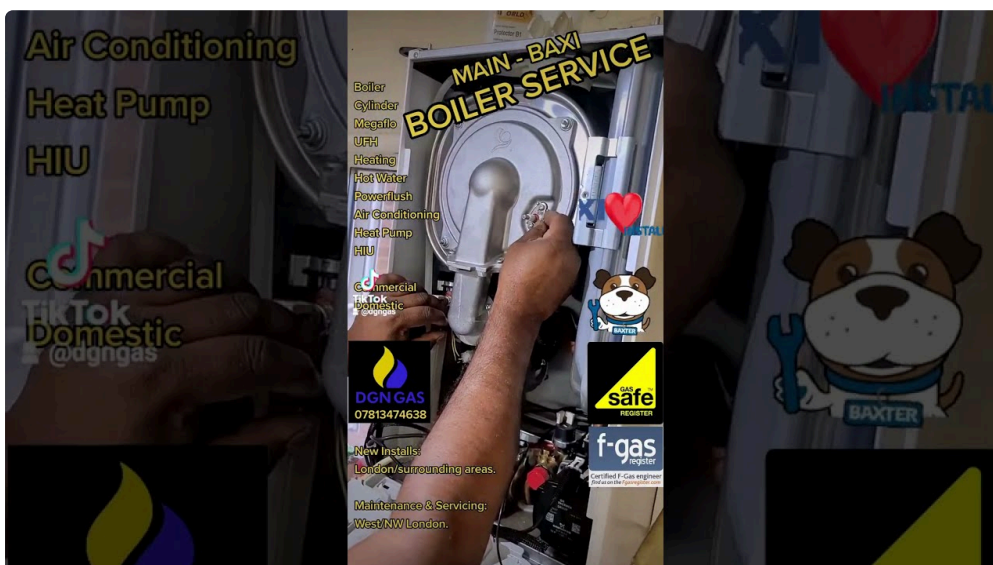
## Getting the correct aid: what to ask until now an engineer starts

When you name out a plumber or gasoline engineer, you would like the individual to consider really and give an explanation for their plan. You can ask life like questions that expose regardless of whether they diagnose appropriately or simply substitute ingredients.

You can ask what they are going to assess first. You can ask what facet is such a lot doubtless to be guilty given your signs and symptoms, and what else they are going to rule out. You can ask what assessments they are going to carry out for gas appliances, and whether the work will include a Gas safe practices certificate while appropriate.

For boiler-similar complaints, ask whether or not the fault seems to be tied to warm water call for or method stream. If they point out scale or sludge, ask what proof helps that review. For Power Flush discussions, ask what the expected gain is to your specific scenario, and what they will money earlier and after.

Good engineers are happy with questions, as a result of the most beneficial paintings is clear. It may perhaps sense slower to invite, yet it recurrently speeds up the accurate process by means of preventing repeated visits.



## A realistic image of kitchen plumbing repairs

Kitchen plumbing maintenance and installations are infrequently one-size-matches-all, even if the symptom seems to be well-known. A dripping faucet is usually a worn washing machine, yet it could possibly also be a misaligned becoming after recent work. Slow drainage will also be a trapped blockage, or it will probably be a shared waste configuration with a dishwasher that behaves in a different way all over its cycle. Hot water complaints could be a faucet issue, but they also can be a boiler efficiency hassle that purely indicates itself at some stage in general use.

The ideally suited consequences come from combining cautious statement with properly legit involvement. When fuel is interested, peculiarly with boiler breakdown, Gas Fire Service, Gas Cooker Installation, or Gas defense certificates standards, the riskless determination is to have faith in the precise qualification and genuine testing. When plumbing is concerned, the trustworthy desire is to trace well, clear intelligently, and keep away from "bandage fixes" that masks structural troubles.

A kitchen may want to consider unswerving. Once you might have the plumbing and warm water conduct looked after, the day-to-day rhythm gets less demanding lower back, you quit planning round faults, and you get again to cooking devoid of enthusiastic about the pipes beneath.