

If you've got you have got an LPG boiler in Essex, you understand the foremost big difference from a common mains gasoline setup. You're working with cylinders or a tank, and meaning your safeguard tests can not be "set and put out of your mind". The fantastic information is that LPG techniques can run brilliantly for years when they're put in in fact, serviced usually, and taken care of with the correct admire whilst anything else feels off.

I've attended name-outs in which the problem appeared minor on arrival, then became whatever price taking seriously. In other circumstances the alternative befell, a house owner apprehensive about a noise or a smell that became explainable as soon as we checked the pipework and the burner condition. This booklet is outfitted around what I've considered sometimes: the small signs and symptoms, the sensible routines, and the practical moves that hold you reliable and avoid your boiler operating effectively.

LPG boiler safety starts offevolved with the basics that you can control

A boiler is a pressure appliance, a burner equipment, and a vented combustion procedure unexpectedly. With LPG, you upload the additional layer of the gas deliver. That is why defense will never be close to the boiler itself, it's also approximately garage and birth.

The maximum necessary addiction is understanding what "accepted" seems to be and appears like in your own home. Most revolutionary boilers cycle on and rancid routinely, certainly when you have radiators plus scorching water. That biking just isn't robotically a difficulty. What subjects is whether you're seeing repeated ignition makes an attempt, power considerations with power, soot marks across the combustion quarter, or wonderful smells.

If you ever suspect an LPG leak, do no longer attempt to troubleshoot it yourself. Shut off deliver if you possibly can accomplish that properly, ventilate, and make contact with the suitable gurus. LPG is heavier than air, so it may well settle low in rooms or near pipework runs. That's precisely why "I can't scent anything, so it will have to be great" seriously is not an excellent rule. Sometimes the odor is faint, occasionally it's masked by cooking odours or bad air flow. Safety skill appearing on indications and letting qualified engineers verify the problem.

What to observe for: caution indicators right through accepted use

Homeowners continuously describe issues in techniques that are necessary to an engineer. "It takes ages to pale." "The flame seems to be the different." "The radiators warmth unevenly." "There's a whiff near the cabinet." Those descriptions are gold, due to the fact they level you closer to the burner, ignition, airflow, or equipment circulation.

Here are the indicators that mainly deserve spark off concentration, whether or not the boiler keeps going for walks for now:

- **Frequent ignition retries** or the boiler suffering to set up a sturdy flame.
- **Drops in formulation pressure** that you will need to perfect on a regular basis.
- **Cold spots on radiators** or slow heat-up that's new in your setup.
- **Sooting, black marks, or noticeable contamination** across the boiler case or flue termination vicinity.
- **Unusual noises** which includes persistent banging, gurgling, or kettling that looks getting worse.
- **Odours** close to the boiler, pipework, or LPG garage location.

A speedy observe on drive: in many crucial heating structures, a small prime-up is conventional from time to time, in particular with older pipework or if the gadget has been disturbed. But if you're topping up each and every couple of weeks, or you're seeing a consistent decline, that as a rule suggests a leak or an inaccurate part. Leaks are not most effective about remedy, they may be able to have an effect on oxygen balance and ignition stability, and they are able to create circumstances in which combustion is less regular.

Why commonly used provider concerns more with LPG

"Boiler carrier Essex" is a phrase I hear loads due to the fact that folks choose the peace of mind that all the pieces is trustworthy and powerful. With an LPG boiler, servicing just isn't just a prison container-tick or an annual ritual, it's a realistic means to keep breakdowns and expensive repairs.

During a properly provider, an engineer will determine combustion functionality, burner condition, seals, flue integrity, and the controls that manage ignition and fan operation. They'll additionally check the gas instruct system that keep watch over LPG to the burner, and make sure that the nontoxic working collection is going on accurately.

You is probably tempted to stretch the time between providers if the boiler seems quality. The seize is that many screw ups jump as put on and infection other than dramatic "forestall working" faults. A burner can slowly acquire deposits, the flame features can flow, and the ignition gadget can take longer to determine a secure burn. Those changes in general exhibit up first as "it's no longer as sharp because it was", no longer as a complete shutdown.

If you prefer a running rule of thumb, feel in terms of preventing "boiler breakdown Essex" trouble before they delivery. A properly-serviced formulation is much less most likely to cause repeated fault codes, much less likely to be afflicted by poor combustion, and a ways much less likely to improve a sticky valve or failing electrode that simply will become apparent on a chilly night.

Boiler breakdown in Essex: what to do whilst things pass wrong

When a boiler fails, you need to make a short name approximately protection and chance. If there's any smell of gasoline, indications of flame failure, noticeable soot, or suspected venting trouble, deal with it as a protection depend first. If the boiler has stopped with an errors code and there are not any smell or soot worries, it is easy to always test the fundamentals even as you look forward to an engineer.

For LPG procedures, I additionally advise paying attention to the fuel supply, since it's achievable for the boiler fault to be secondary to LPG availability or start themes. Some households run low on gasoline, then blame the boiler. Often it's a timing downside with intake, now not a burner downside.

Quick moves formerly an engineer arrives

If you're locked out, cold, and attempting to ward off making anything worse, those checks may help collect necessary counsel:

1. **Note the fault code** from the show and the way commonly it seems.
2. **Check device pressure** at the gauge and whether it has dropped unusually.
3. **Look for seen blockages or damage** across the boiler and flue space.
4. **Confirm the LPG source status** if you comprehend wherein the gauge or indicator is in your tank or cylinders.

5. **Avoid repeated reset attempts** if the code helps to keep returning without delay.

That ultimate factor concerns. Repeated resets can usually mask the foundation cause and escalate wear on ignition supplies. It's improved to record what occurred, then enable the top technician run the acceptable tests.

LPG boiler setting up: the hidden defense layer

Many folk concentrate on the boiler sort and ignore the installation small print. With LPG, installation best is rather great. Wrong sizing of regulators, fallacious pipe runs, or poorly planned ventilation can flip a nontoxic gadget into an ongoing headache.

If you're puzzling over "Boiler Installation Essex", don't just shop the unit cost. Ask about:

- how the engineer is planning the gasoline provide course on your LPG tank or cylinders,
- how flue termination can be treated to sidestep downdraught and condensation concerns,
- how the manner is being balanced to suit your radiators or underfloor heating,
- no matter if they'll test for safe combustion performance and be sure riskless operation right through commissioning.

I've noticeable "first rate ample" installs in which the boiler worked for months after which started behaving oddly. Often the basis intent changed into anything that purely turned into evident because the equipment cycled underneath precise iciness demand.

Also, confirm office work and commissioning are effectively completed. Commissioning exams are what separate a risk-free set up from an assumption. If you're shifting from an additional gas supply or altering format, the most secure method is to deal with the LPG grant and the boiler as one machine, no longer two unrelated jobs.

Boiler repair: what repairs oftentimes involve, and what to be wary about

"Boiler Repair Essex" can cowl the whole thing from sensible phase replacements to full burner and handle maintenance. In my trip, the ideally suited engineers give an explanation for the limitation in simple phrases: what failed, why it failed, and how they'll be certain the boiler is dependable after the restore.

Common restoration classes can come with ignition electrode things, fan or air stress sensing faults, burner contamination, leaking materials, or handle board issues. With LPG structures, technicians will even check regulators, test the gasoline manage valve, and ensure that the burner is receiving gas at an appropriate charge and power.

What to be wary about is indistinct prognosis. If a restoration suggestion skips fundamental checks like combustion analysis or flue situation verification, it will restoration the symptom while leaving a safeguard menace or an performance loss behind.

If your boiler is older, you may very well be offered a alternative between repair and replacement. That's a valid communication. Sometimes restoration makes sense for a selected portion. Other instances, repeated faults will probably be a sign that the boiler has reached the cease of its riskless life, chiefly if there are corrosion themes, elderly seals, or chronic inefficiency. A sensible engineer will discuss due to equally suggestions in preference to steering you closer to one outcomes.

Gas safety certificate Essex: apprehend what applies to your home

If you've gotten a rented estate or a advertisement premise, "Gas safeguard certificate Essex" is portion of the conversation. LPG installations and appliances nevertheless require precise assessments, and certification procedures rely upon the precise atmosphere and prison tasks.

In prepare, I advocate you treat LPG safe practices checks with the comparable seriousness as mains gas assessments. If you're undecided what certificates applies to your hindrance, dialogue to the installer or provider company. For landlords, the key is making certain the precise once a year [Boiler Installation Essex](#) assessments are done by a qualified legitimate, with files equipped as required.

Even for owners, you benefit from having the boiler and LPG technique assessed correct. The most reassuring capabilities are those where you get clean affirmation of risk-free operation and any corrective paintings documented.

Gas fires, fuel cookers, and LPG houses: protection doesn't stop at the boiler

A lot of LPG households have more than one equipment. Maybe you've obtained a gas fire within the dwelling room, or a gas cooker in the kitchen, or both. That's in which "Gas Fire Service Essex", "Gas Fire Installation Essex", and "Gas Cooker Installation Essex" come into play.

The theme is the related: combustion demands properly air give and appropriate venting. LPG appliances usually are not inherently hazardous, however poor installation or omitted preservation can lead to incomplete combustion and soot construct-up, and that's the place chance rises.

I've walked into houses in which the boiler became just lately serviced but the fuel hearth had never been checked due to the fact that go-in. The fireplace looked "exceptional" except the flue or burner prerequisites have been inspected. Once it changed into cleaned and altered, it carried out extra incessantly, and the home felt more advantageous average.

If you will have multiple home equipment, it'll be practical to time table their tests jointly. Not basically is it green, it facilitates you spot whether or not there are shared ventilation concerns, shared flue concerns, or systemic issues affecting a couple of equipment.

Power flush Essex: whilst it supports, and whilst it's the inaccurate tool

Sometimes the signs and symptoms human beings name "boiler complications" are easily vital heating move worries. If radiators are cold on the excellent, heat at the base, or the process heats inconsistently, you might be handling sludge or poor circulation.

That's the place "Power Flush Essex" can input the image. A vigor flush uses a high speed movement to dislodge and take away sludge from the device. Done thoroughly, it is going to restore flow and upgrade warm output.



What to expect on a Boiler Service



But it's no longer a magic resolution. In older strategies with special accessories or if there are everyday leaks, forcing a drive flush can trigger troubles. It can even be overkill if the difficulty is airlock, diverter valve functionality, or boiler inside circulate. The great strategy is a diagnosis first, then identifying whether a strength flush is justified.

If you're sold a electricity flush, ask what it's focused on. A capable engineer may want to provide an explanation for what measurements or observations indicate sludge is latest, and how they'll offer protection to your gadget afterwards. Depending on the boiler and method situation, they will propose treatment and ongoing monitoring.

Plumbing and LPG approaches: the uninteresting bits that cease emergencies

"Plumbing Essex" sounds vast, but in LPG buildings it right away overlaps with the heating procedure. Pipework, valves, enlargement vessels, and filling loops are the unsung heroes. When they fail or are incorrectly geared up, the boiler can behave badly even though the burner is organic.

Examples of plumbing worries which may lead to boiler complaints comprise:

- leaking joints that slowly drop machine power,
- a misbehaving tension remedy discharge problem,
- an expansion vessel it is waterlogged or lower than appearing,
- unsuitable deploy of flushing or filling kit,
- air ingress on designated pipe runs.

These usually are not glamorous maintenance, but they're precisely the type of faults that trigger "it maintains wasting strain" and "it's under no circumstances extremely perfect" over the years.

If your equipment has been altered by earlier householders or tradespeople, ask approximately what modified. A small amendment, a poorly established valve, or a forgotten air vent can change into a ordinary carrier want. The extra historical past you can share, the turbo the analysis basically goes.

Air conditioning and comfort techniques: why it topics to air flow and relatives loads

Many Essex homes additionally have "Aircon Essex" or "Air Conditioning Essex" installations now. That's no longer right away connected to LPG boiler defense, yet it touches consolation, air flow habits, and in certain cases how individuals use indoor air.

For illustration, should you run aircon aggressively even though also conserving inner doorways closed and reducing healthy air flow, combustion home equipment can be changed into more sensitive to indoor conditions. Most brand new properties have balanced ventilation and extraction techniques, yet behaviour issues.

If you've an air conditioning unit and also you become aware of boiler performance ameliorations coinciding with special utilization patterns, it's well worth discussing with your engineer. They might also examine ventilation routes and be sure the boiler's air supply is still inside dependable expectations.

Burger van gasoline and business setups: LPG defense becomes operational

Not each LPG activity is a home owner situation. "Burger van fuel Essex" is a proper-global classification in which timing and reliability count. In a business surroundings, LPG structures are ordinarily used oftentimes in backyard or semi-enclosed locations, and the operator wants equally defense and uptime.

The same fundamentals practice, proper regulators, dependable pipework, secure connections, and authentic servicing. In business contexts, the operational pressure could make protection slips much more likely. It's precisely why scheduling and documentation depend. A perfect industrial gas carrier service will center of attention on nontoxic operation, swift fault diagnosis, and preventive exams rather than watching for a failure.

If you're operating an LPG setup for catering, perpetually deal with safeguard as element of the workflow. People frequently plan their cooking exercises round fuel availability, yet they need to also plan their safe practices exercises around equipment well-being, leak exams, and regulator overall performance.

A real looking maintenance movements you possibly can the fact is keep

Not every body needs a heavy schedule. The secret is a small movements that catches difficulties early and avoids needless resets or panic calls.

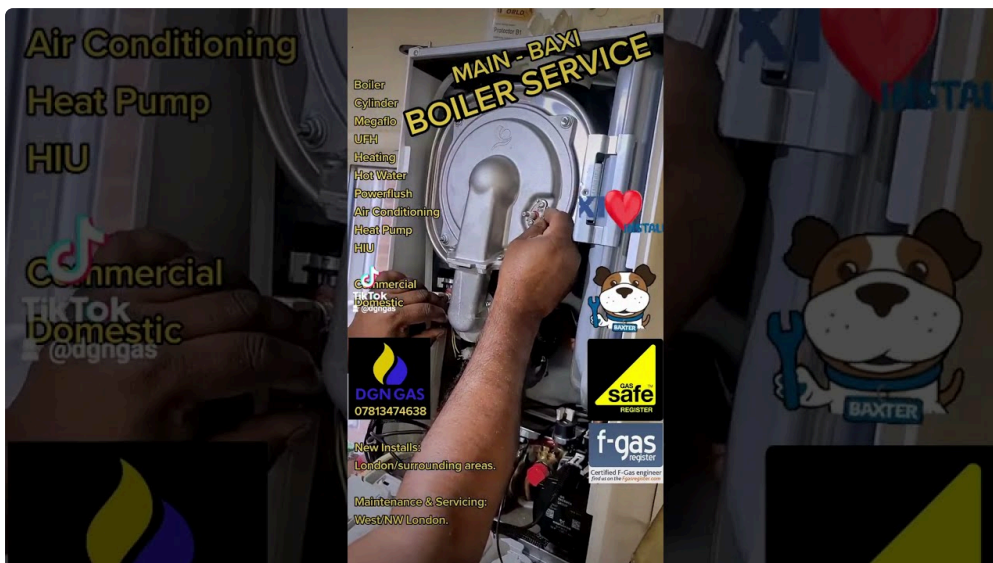
In my view, the very best upkeep for householders is statement plus practical servicing. Observe the boiler behaviour in the time of standard operation, retain vents and outside flue terminations transparent of particles, and don't forget about routine patterns. If the boiler starts off to act differently, treat it as info, not an inconvenience.

A basic relatives record for LPG boiler care

If you desire a brief "save an eye fixed on it" mindset, this is an effective start line:

1. **Check the drive gauge** from time to time, and observe how directly it differences.
2. **Inspect the flue subject externally** for blockages, hen particles, or ruin after storms.
3. **Watch for soot or staining** around the boiler casing or regional walls.
4. **Listen for variations in ignition** and repeated startup makes an attempt.
5. **Record fault codes** when they happen, which include the time of day and weather if related.

That's not a DIY repair plan. It's a sample-spotting method that makes engineer visits quicker and extra good.



Choosing the excellent carrier dealer in Essex

When you're in quest of "LPG Essex" strengthen, you're certainly seeking out two issues: protection competence and real looking reliability. A riskless provider doesn't simply do the activity, they give an explanation for it. They also appreciate your place, blank up after themselves, and finished commissioning or assessments exact.

Here's what I endorse whenever you're identifying who to belief:

- Ask regardless of whether they carrier LPG boilers as a recurring, not just as an occasional process.
- Confirm they carry out combustion and safeguard assessments precise to the appliance form.
- If you're handling upkeep, ask what tests they'll run after the fix to affirm riskless operation.
- If you need install, ask how they manage commissioning and documentation.

Good communique things because it reduces misunderstandings. You choose to recognize what the engineer determined, what necessities doing now, what can wait, and why. A trusted skilled may also be transparent if a restore is simply not value-high quality when put next with substitute.

Dealing with uncertainty: "Is it the boiler or the LPG give?"

One of the trickiest portions of LPG fault managing is isolating fuel give difficulties from appliance problems. Sometimes the indicators look like a boiler fault. The boiler can display blunders, battle to ignite, or close down as a consequence of flame instability. Meanwhile the underlying reason will be low offer, a regulator limitation, or start delays.

When you're troubleshooting, don't guess. Make dependable observations. If your LPG tank or cylinders are close to empty, and the boiler behaves in a different way around those occasions, that suggestions is critical on your engineer. They can concentrate the diagnosis at the fuel equipment in a timely fashion in preference to spending time on unrelated ingredients.

If you've bought cylinders, additionally remember real looking realities like placement, publicity, and regardless of whether the setup suits the equipment necessities. In tank procedures, recall regardless of whether the tank gauge and shipping agenda are regular together with your absolutely consumption. People regularly plan their gasoline purchases stylish on a difficult expectation, and then iciness call for arrives and the assumptions fall apart.

Keeping LPG dependable even though you propose ahead for winter

Winter is while boiler points turned into urgent. The smartest time to you have got safeguard and protection is ahead of the cold snap. If you're booking a "Boiler Service Essex" appointment, try and goal for past in the season, whilst engineers are most probably to have extra flexibility and also you're much less restless with the aid of each day heating wishes.

Also, when you've got different home equipment in the dwelling, evaluate whether they must always be inspected as component to the same seasonal plan. A "Gas safety check Essex" conversation can cover more than one appliance kinds, and it would discover air flow considerations that would otherwise move left out.

And should you're making plans enhancements which include more suitable heating controls or alterations to air flow, it's valued at coordinating these alterations with your boiler security tests. Making alterations without excellent verification is how small innovations turn out to be unforeseen headaches.

Final notice, without worry-mongering

LPG boilers will also be risk-free, powerfuble, and good in the event you treat them just like the useful, engineered strategies they may be. The big difference among a comfortable iciness and a anxious one is almost always not success. It's servicing subject, right setting up, transparent fault handling, and the willingness to take defense signs and symptoms severely.

Whether you want "Boiler Repair Essex", "Boiler Installation Essex", guide with a "Gas Fire Service Essex" otherwise you're searching out a hobbies "Gas safeguard certificates Essex" manner, the primary thread is the similar: safeguard checks sponsored with the aid of real diagnostics, now not guesswork.

If you desire, tell me what LPG setup you have (tank or cylinders), approximately how historical the boiler is, and what indicators you're seeing. I can assist slim down what to watch for and what inquiries to ask if you happen to e-book the following service or restoration.